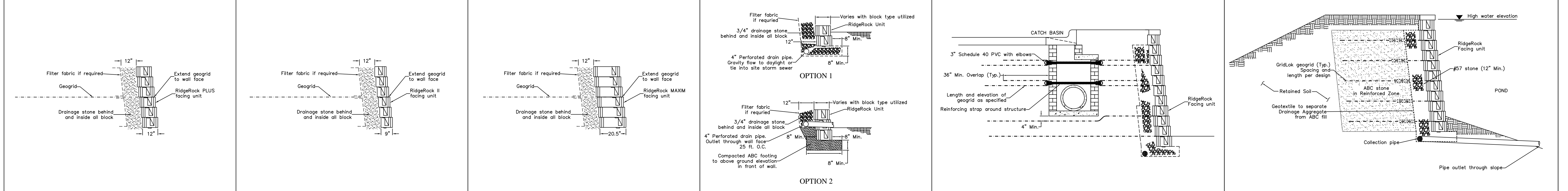
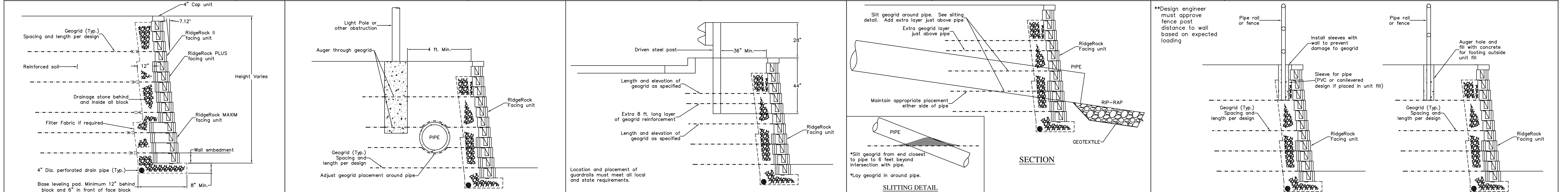


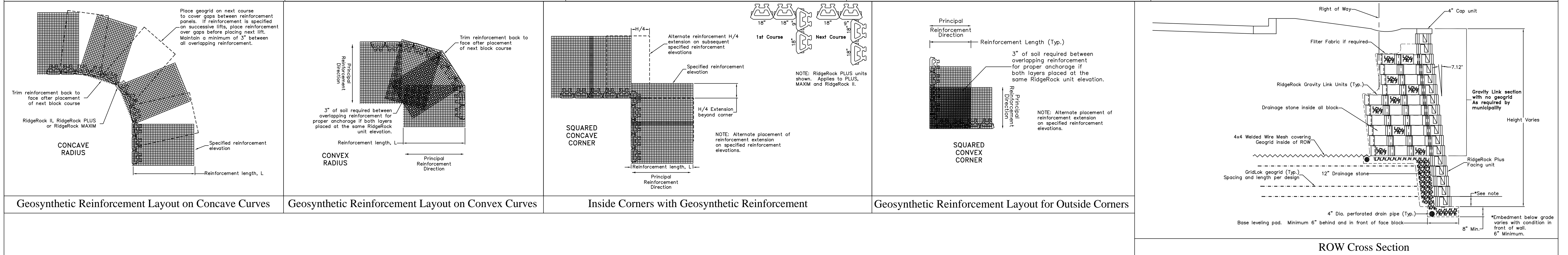
RidgeRock II Unit RidgeRock Plus Unit RidgeRock Maxim Unit Outside Corner formation by Corner Block Outside Corner with Field Made Corner Block Typical Unit Fill Requirements



RidgeRock PLUS Facing Connection RidgeRock II Facing Connection MAXIM Facing connection Footing Details Typical Large Diameter Vertical Penetrations Typical RidgeRock Wall Section in Berm application



Typical RidgeRock MSE Section Parallel Pipe and Small Diameter Vertical Penetrations Guard Rail Installation for RidgeRock MSE Walls Typical Perpendicular Pipe Penetration Typical Perpendicular Pipe Penetration



Geosynthetic Reinforcement Layout on Concave Curves Geosynthetic Reinforcement Layout on Convex Curves Inside Corners with Geosynthetic Reinforcement Geosynthetic Reinforcement Layout for Outside Corners ROW Cross Section

This drawing contains proprietary information and confidential information and shall not be used, copied or disclosed without written permission from RidgeRock Retaining Walls Inc. Protected under U.S. and foreign copyright and patent law. All rights reserved.

RidgeRock
 Retaining Walls, LLC
 P.O. Box 241233
 Charlotte, NC 28224
 704-504-3358
 Fax: 504-3038

RIDGEROCK MSE DETAILS

DRAWING SET:	REVISION DATE:	UNITS:	SHEET #:	DRAWING NAME:
RIDGEROCK MSE	6.14.22	Inches	1 OF 1	RR Details