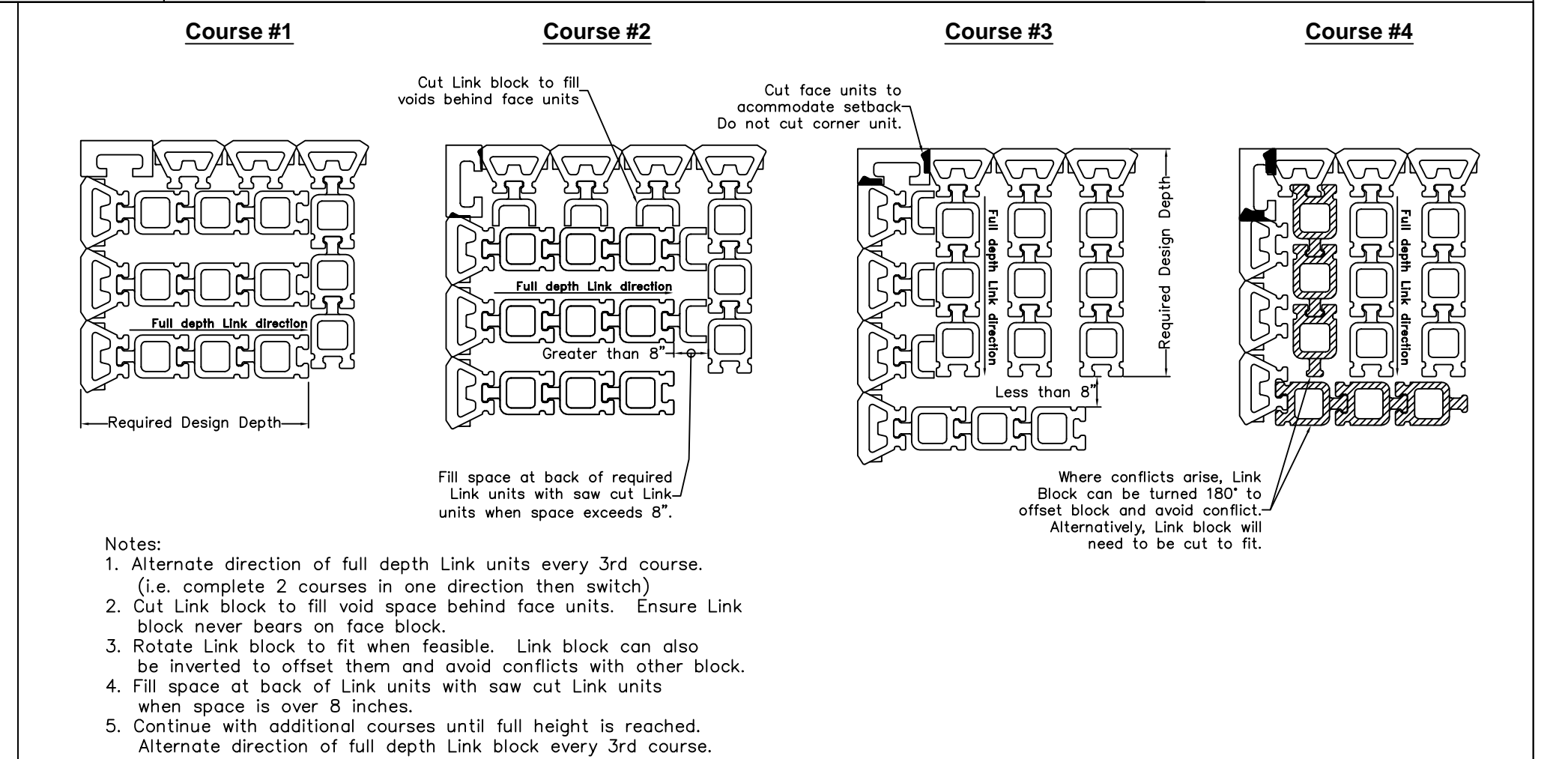
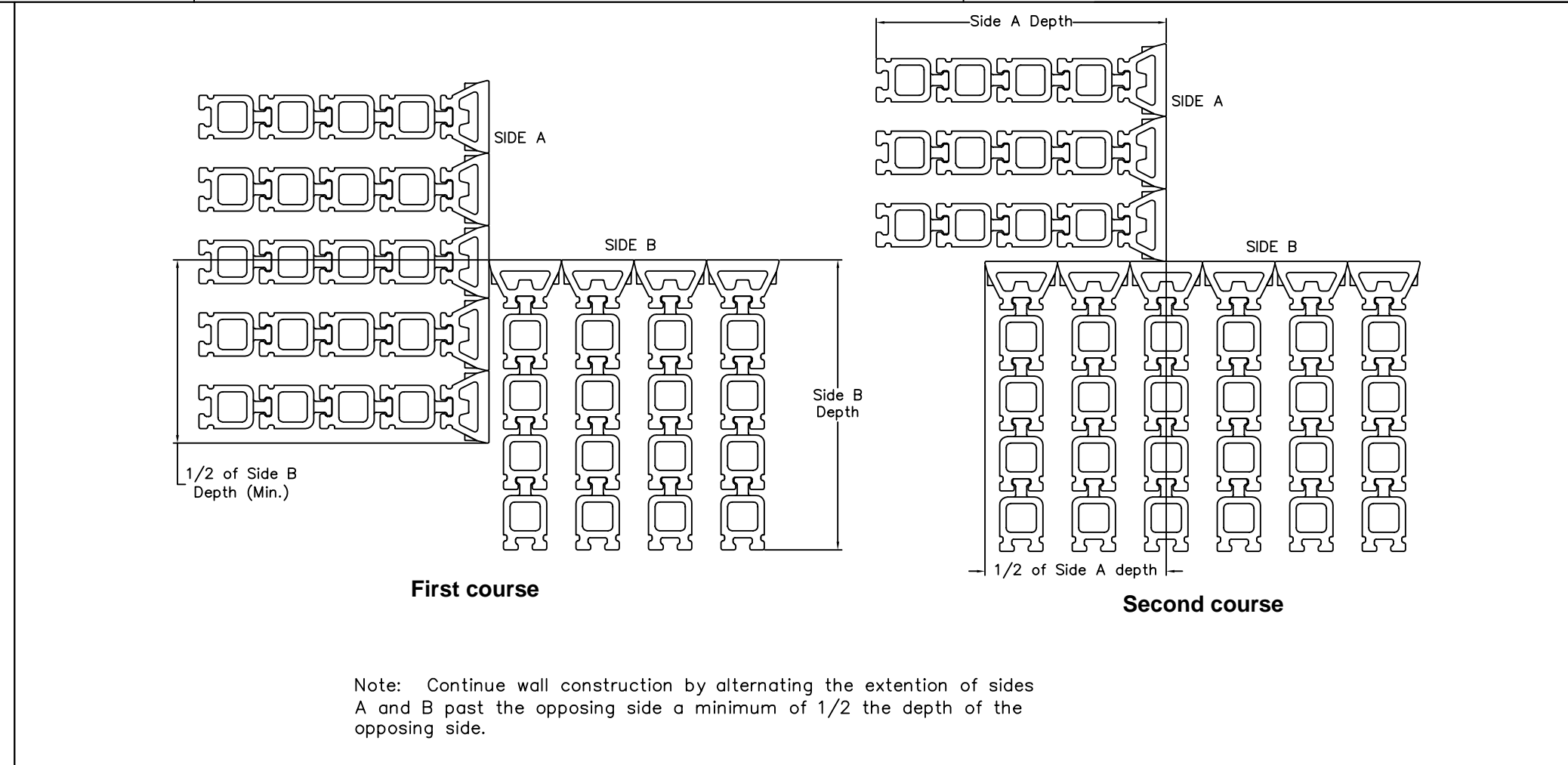
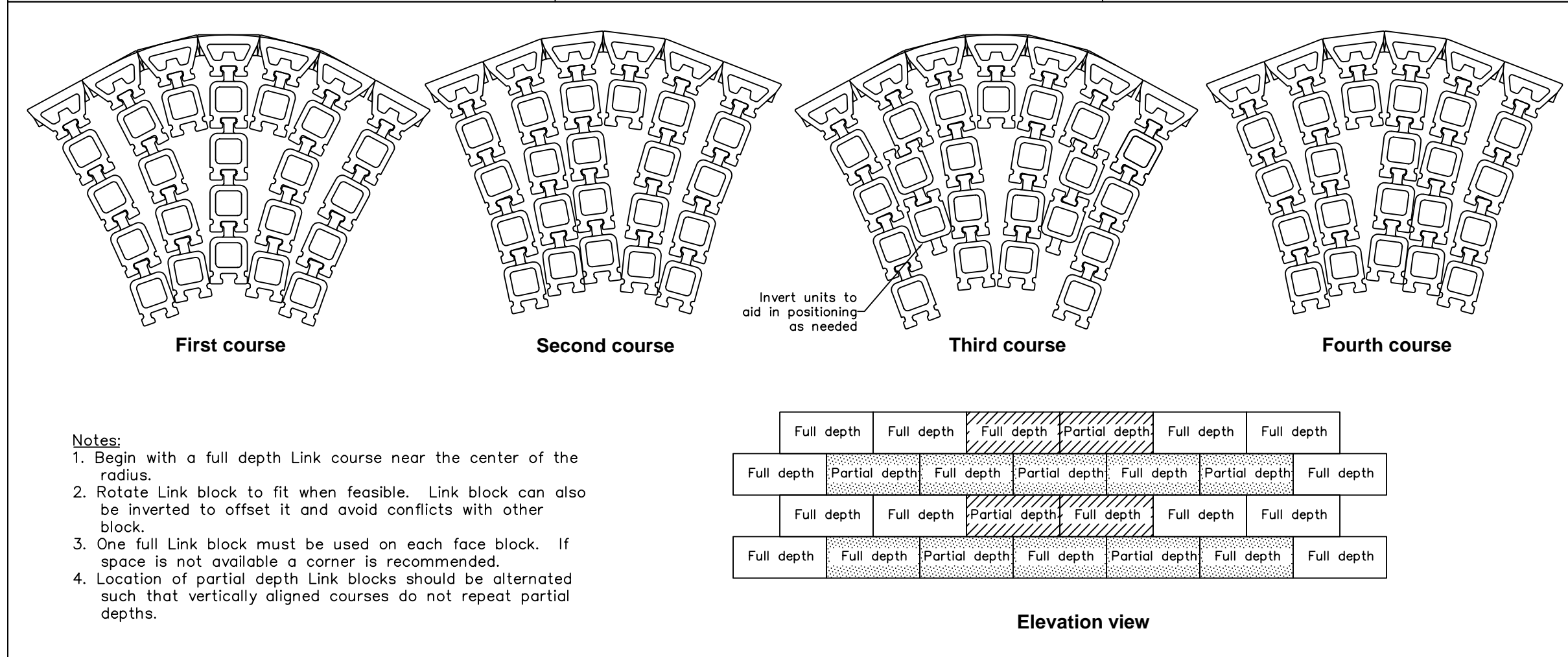
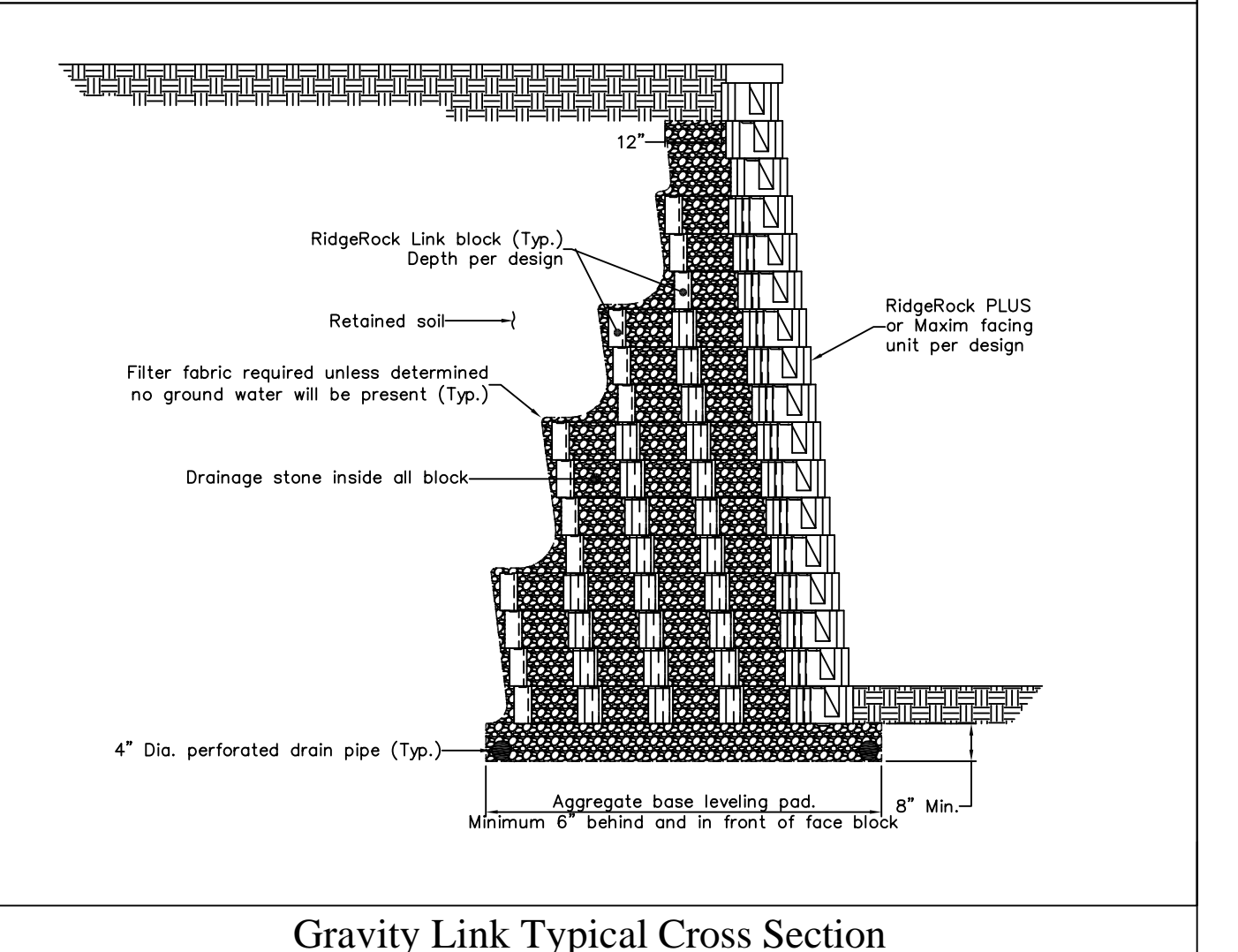
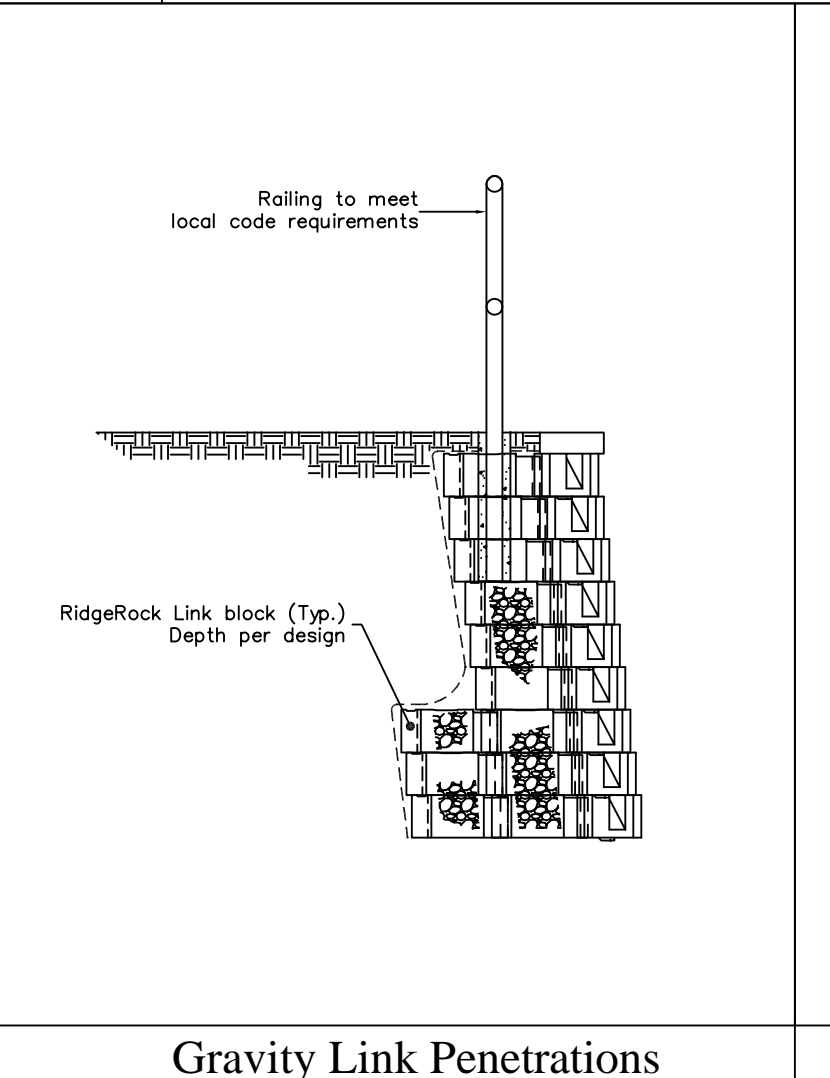
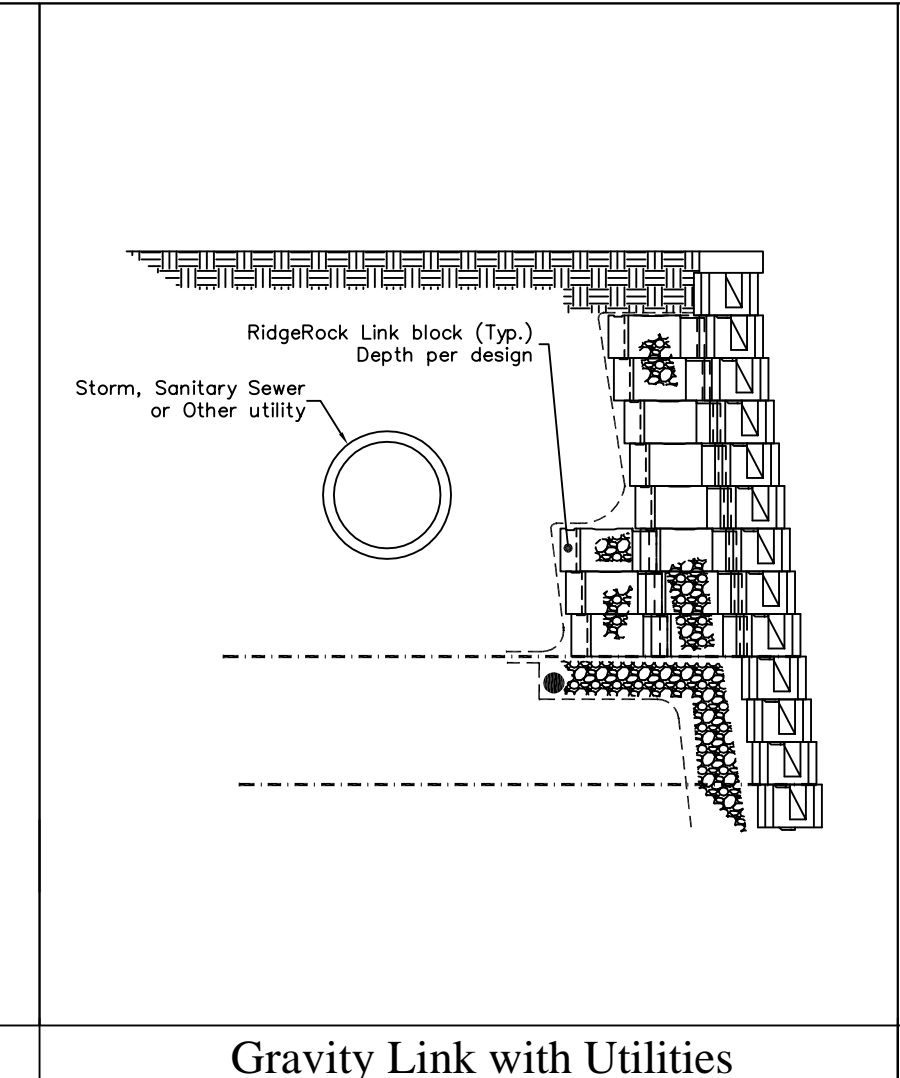
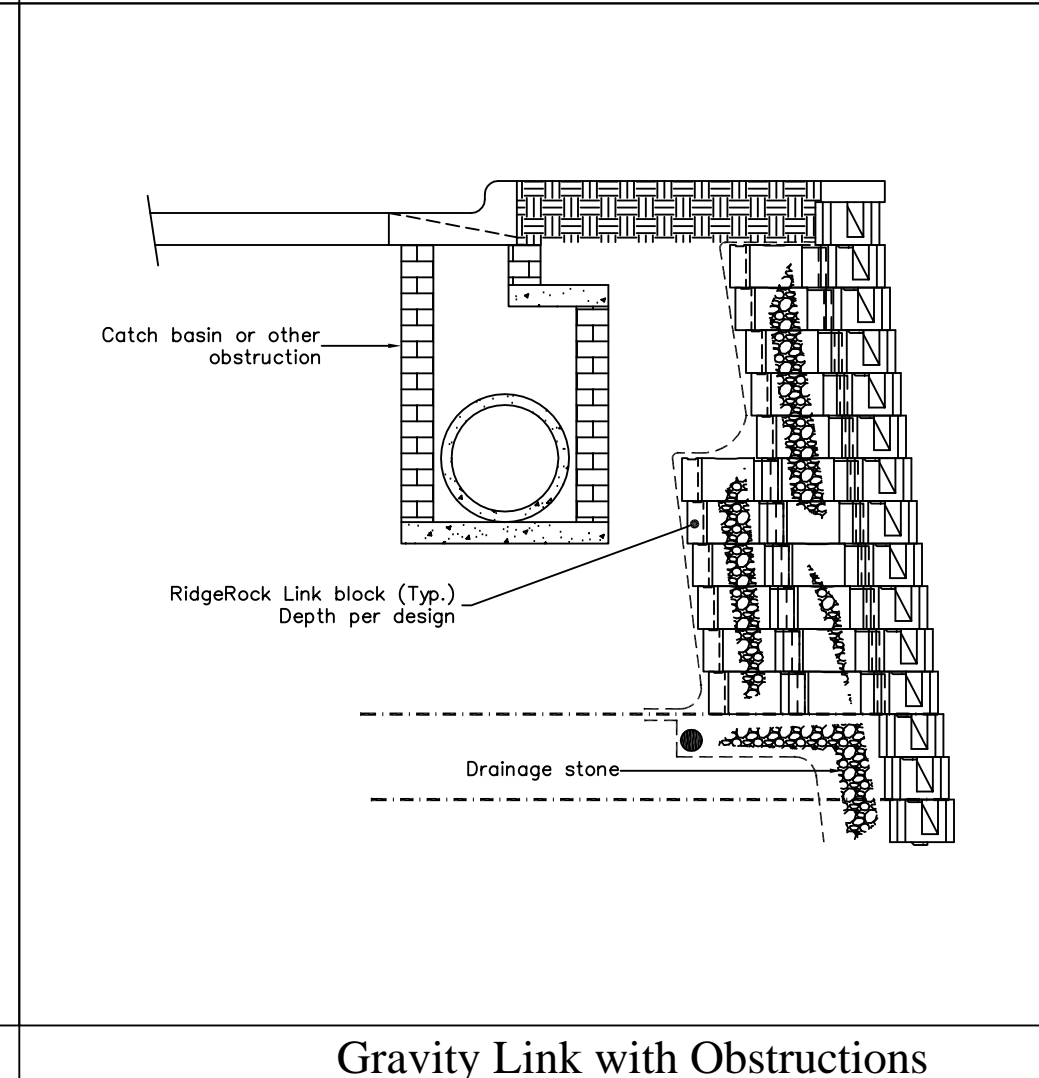
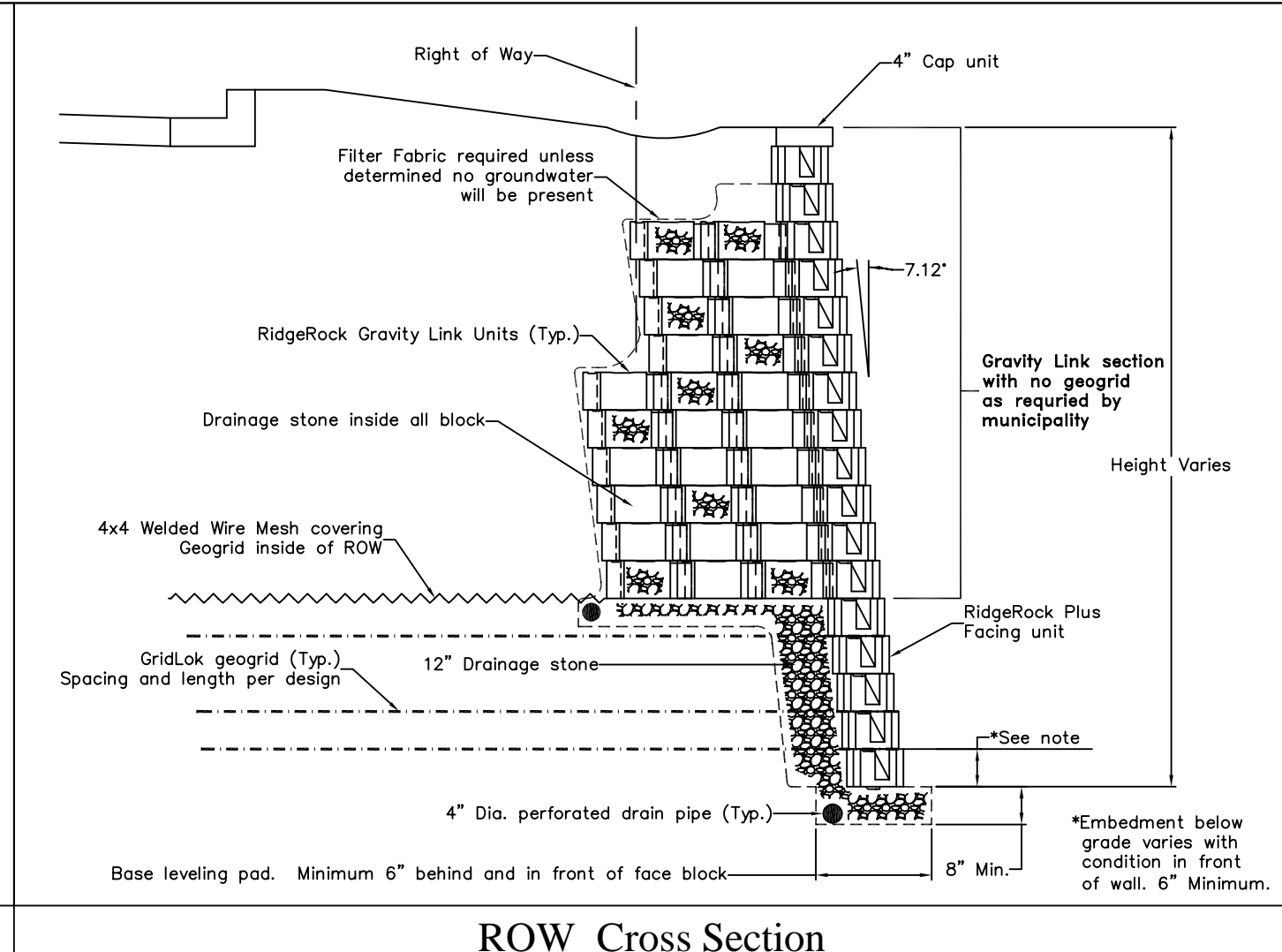
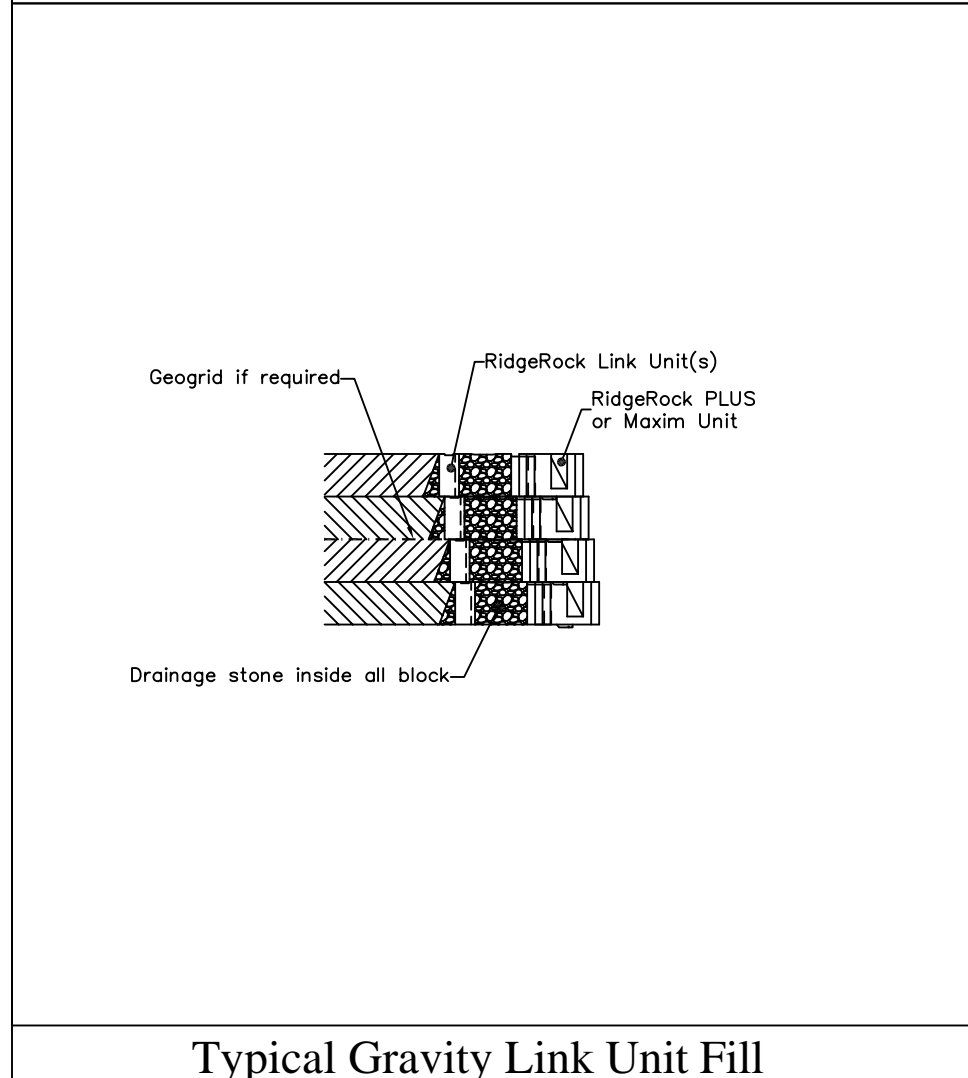


| RidgeRock PLUS Facing units | | |
|-----------------------------|----------------|------------------|
| Number of Link units | Maximum Radius | Depth of Section |
| 1 | 6'-0" | 2'-3" |
| 2 | 8'-7" | 3'-4" |
| 3 | 11'-8" | 4'-9" |
| 4 | 14'-8" | 6'-0" |
| 5 | 17'-10" | 7'-3" |
| 6 | 21'-0" | 8'-6" |
| 8 | 27'-2" | 11'-0" |
| 10 | 33'-4" | 13'-6" |

RidgeRock II Unit RidgeRock Plus Unit RidgeRock Maxim Unit RidgeRock Link Unit RidgeRock Link and Plus Unit Gravity Link Maximum Radii Without Modification



Gravity Link Unit Layout on Convex Curves Gravity Link Inside Corner Gravity Link Outside Corner Construction



Typical Gravity Link Unit Fill ROW Cross Section Gravity Link with Obstructions Gravity Link with Utilities Gravity Link Penetrations Gravity Link Typical Cross Section

This drawing contains proprietary information and confidential information and shall not be used, copied or disclosed without written permission from RidgeRock Retaining Walls Inc. Protected under U.S. and foreign copyright and patent law. All rights reserved.

RidgeRock Retaining Walls, LLC
P.O. Box 241233
Charlotte, NC 28224
704-504-3358
Fax: 504-3038

RIDGEROCK GRAVITY LINK DETAILS

| | | | | |
|-------------------------------|----------------|---------------|---------------|-------------------|
| DRAWING SET: | REVISION DATE: | UNITS: | SHEET #: | DRAWING NAME: |
| RIDGEROCK GRAVITY LINK | 6.14.22 | Inches | 1 OF 1 | GL Details |